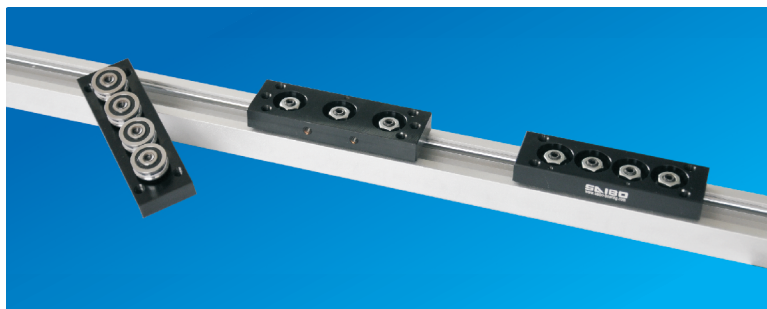


## LGB系列 LGB series



### 产品特性 Character

#### 1.高精度 High precision

导轨直线度 Straightness: 0.05mm/m  
安装高度误差 H tolerance:  $\pm 0.20\text{mm}$

#### 2.高可靠性 High reliability

偏心螺母设计: 调节简单, 应不同的需要而调校至最适合的预紧力。

防松设计: 轴承导轮的固定螺母设计有防松功能。

Eccentric nut design: Easy to adjust suitable preload

Anti-loose design: All connections have anti-loose design

#### 3.高耐磨性 Abrasive resistance

轴经过特殊加硬处理 (硬度可达到 $60 \pm 2\text{HRC}$ ), 表面镀有硬铬, 抗磨性极高, 且具有良好的防锈效果。

Shafts hardness reach  $60 \pm 2\text{HRC}$ , combined chrome-plated, this linear guide has good abrasive resistance.

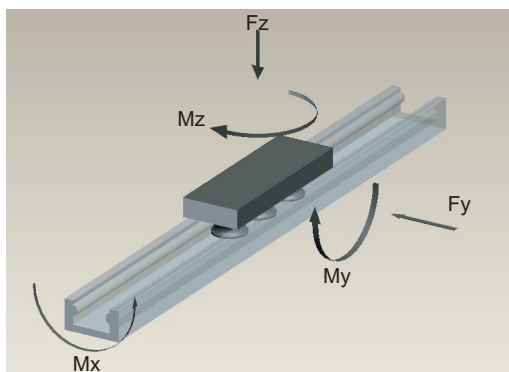
Also it has good anti-rust performance.

#### 4.能承受高速运动 High speed

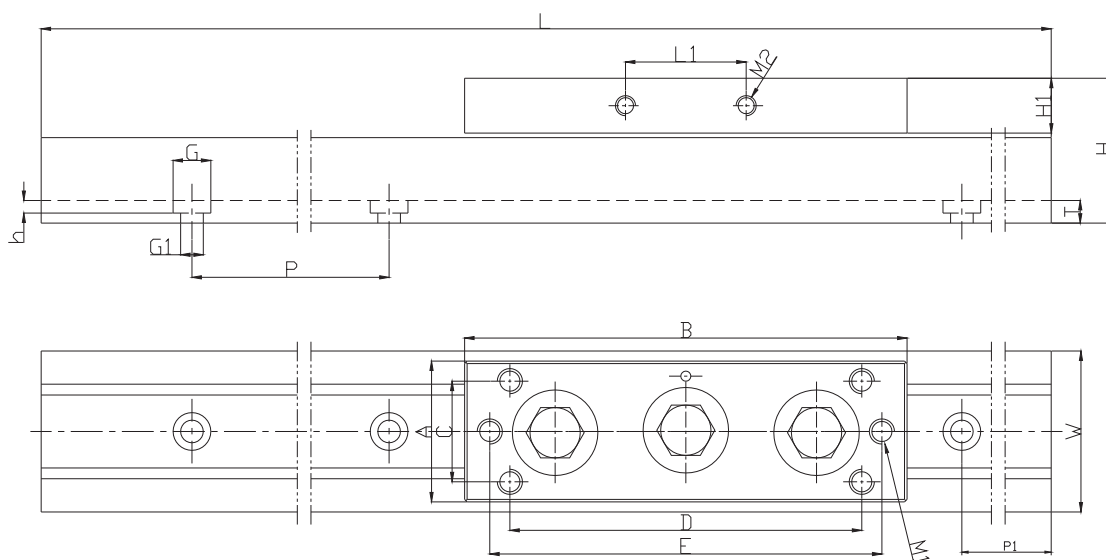
采用高速重载的高精度滚轮, 使滑块能在高速状态下平稳运行。(最大运行速度:  $10\text{m/s}$ , 最大加速度 $50\text{m/s}^2$ )

Max speed: $10\text{m/s}$ , Max acceleration: $50\text{m/s}^2$

### 载荷示意图 Load directions



型号 Type	允许载荷 Load Capacity (N)				
	Fz N	Fy N	Mx Nm	My Nm	Mz Nm
SB-LGB15	450	300	3.75	6	11.2
SB-LGB15N	600	400	7	8	15



型号 Type	组件尺寸 Assembly Dimension (mm)			导轨尺寸 Railway Dimension (mm)							滑块尺寸 Carriage Dimension (mm)							
	H	W	A	T	h	G	G1	P	P1	L	H1	L1	B	C	D	E	M1	M2
SB-LGB15	28.5	32	28	4.5	2.5	7.5	4.5	60	30	1020	10.9	24	88	20	70	78	M5	M4
SB-LGB15N	28.5	32	28	4.5	2.5	7.5	4.5	60	30	1020	10.9	—	88	20	70	—	M5	—