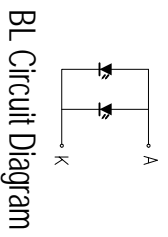
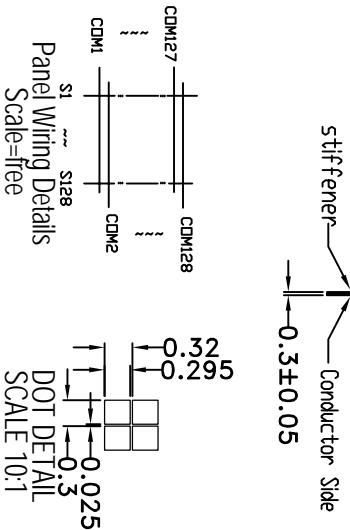


PIN	Configuration
1	SCK
2	SDA
3	/RES
4	/CS0
5	CD
6	VSS
7	VDD
8	VB0+
9	VB1+
10	VB1-
11	VB0-
12	VLCD



HOT DISPLAY

Dwg Title: HTG128128A-25W-12C10-V01

EDC No: Ver: A/0

Scale: 1:1 Unit: mm Tol: ±0.2

Drawn: Checked: Date: 2019-04-17

*1. LCD Display Type	STN-BLUE, Transmissive, Negative
*2. Viewing Direction	6H
*3. LCD Driver Mode	1/128Duty, 1/12Bias
*4. Operating Voltage	VDP=130V(VDD=3.0V)
*5. Operating Temp	-20°C~70°C
*6. Storage Temp	-30°C~80°C
*7. Driver IC	UC1617S
*8. Backlight	WHITE Vf=3.0V If=30mA
*9. RQHS	