

TECHNICAL DATA

Body Type	Line mount
Interface	None
Body Features	Inline, cross pilot
Mounting Hole Diameter	.34 in.
Mounting Hole Depth	Through
Mounting Hole Quantity	2
Open Cavities	2
Cavity	T-2A
Port Size	3/4" BSPP

NOTES *Important:* Carefully consider the maximum system pressure. The pressure rating of the manifold is dependent on the manifold material, with the port type/size a secondary consideration. Manifolds constructed of aluminum are not rated for pressures higher than 3000 psi (210 bar), regardless of the port type/size specified.

PORT DESIGNATORS

Modifiers	Ports
XAW	All Ports: 3/4" BSPP;

CONFIGURATION OPTIONS

Model Code Example: XAW

MODIFIER

6061-T651 Aluminum, Buna-N
IS 65-45-12 Ductile Iron, Buna-N, Blackened

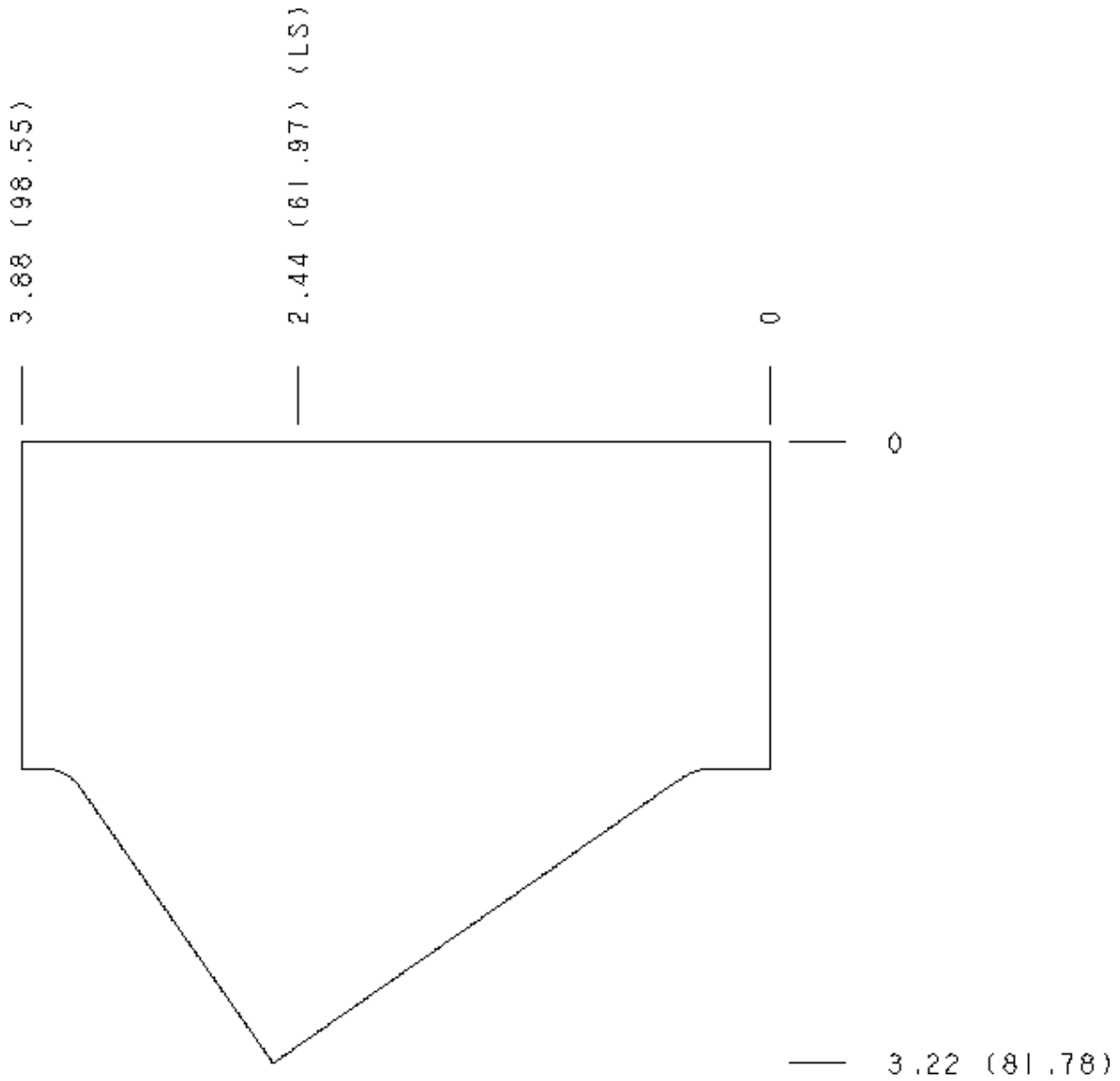
MANIFOLD FACES

FACE GRID

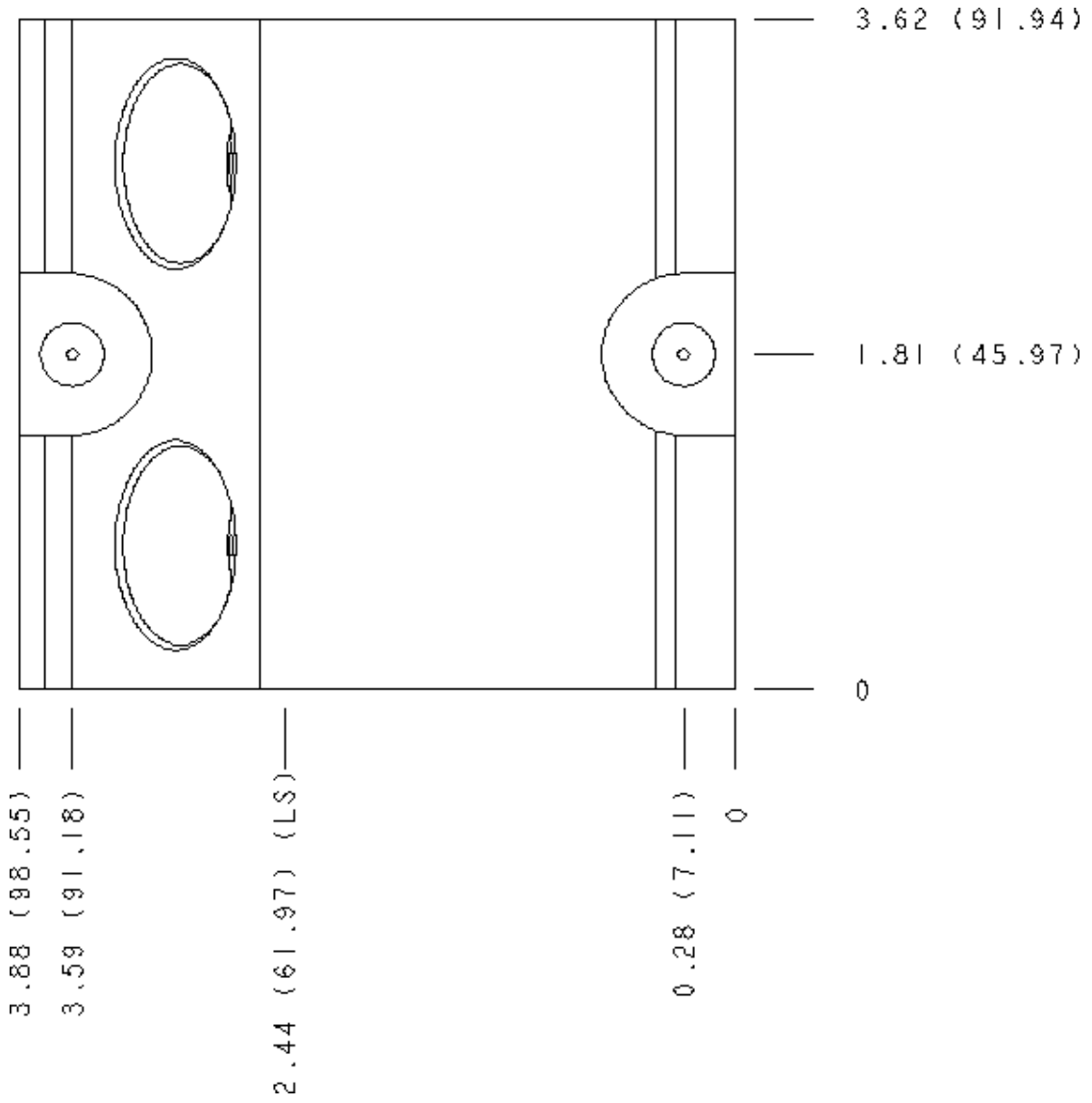


5	6	7	8
9	10	11	12

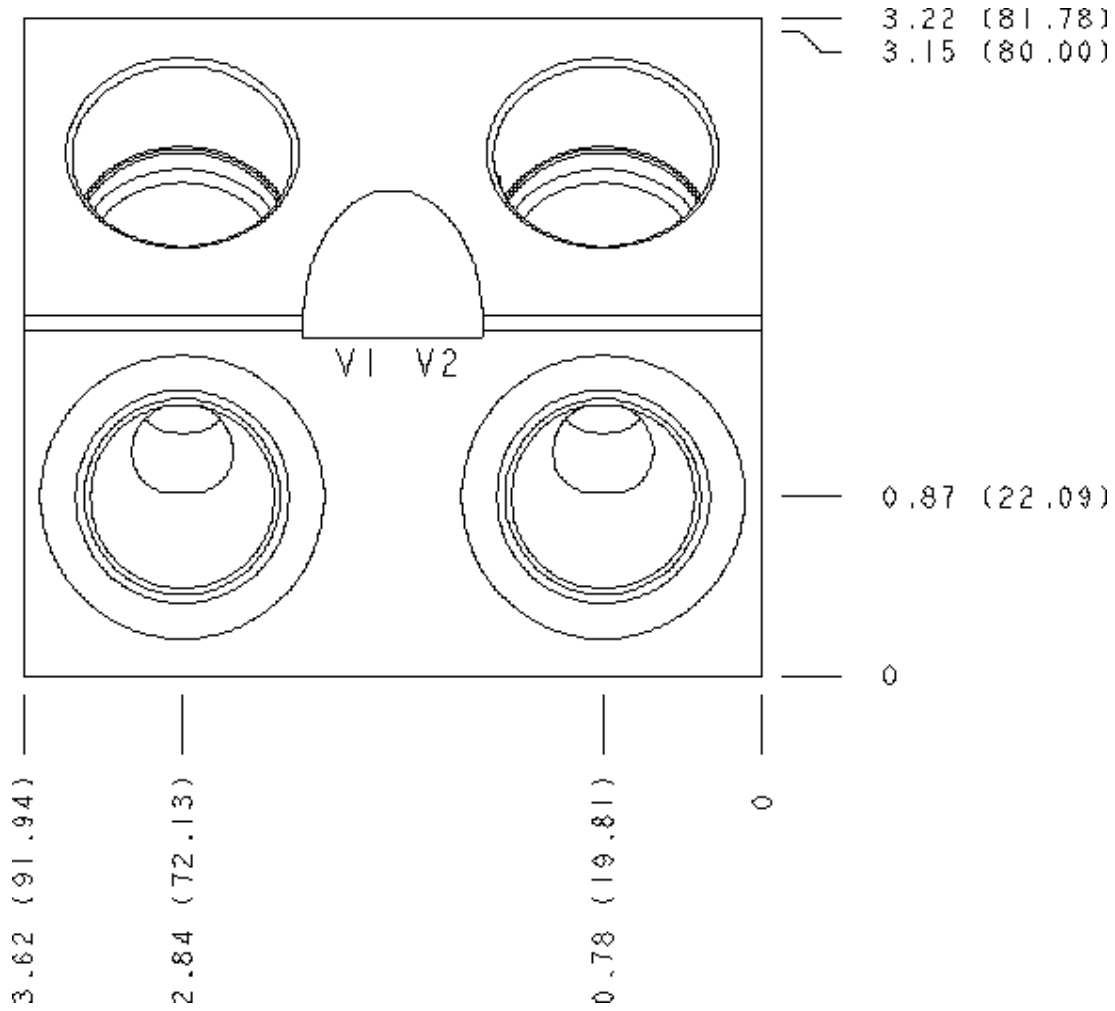
Face 2



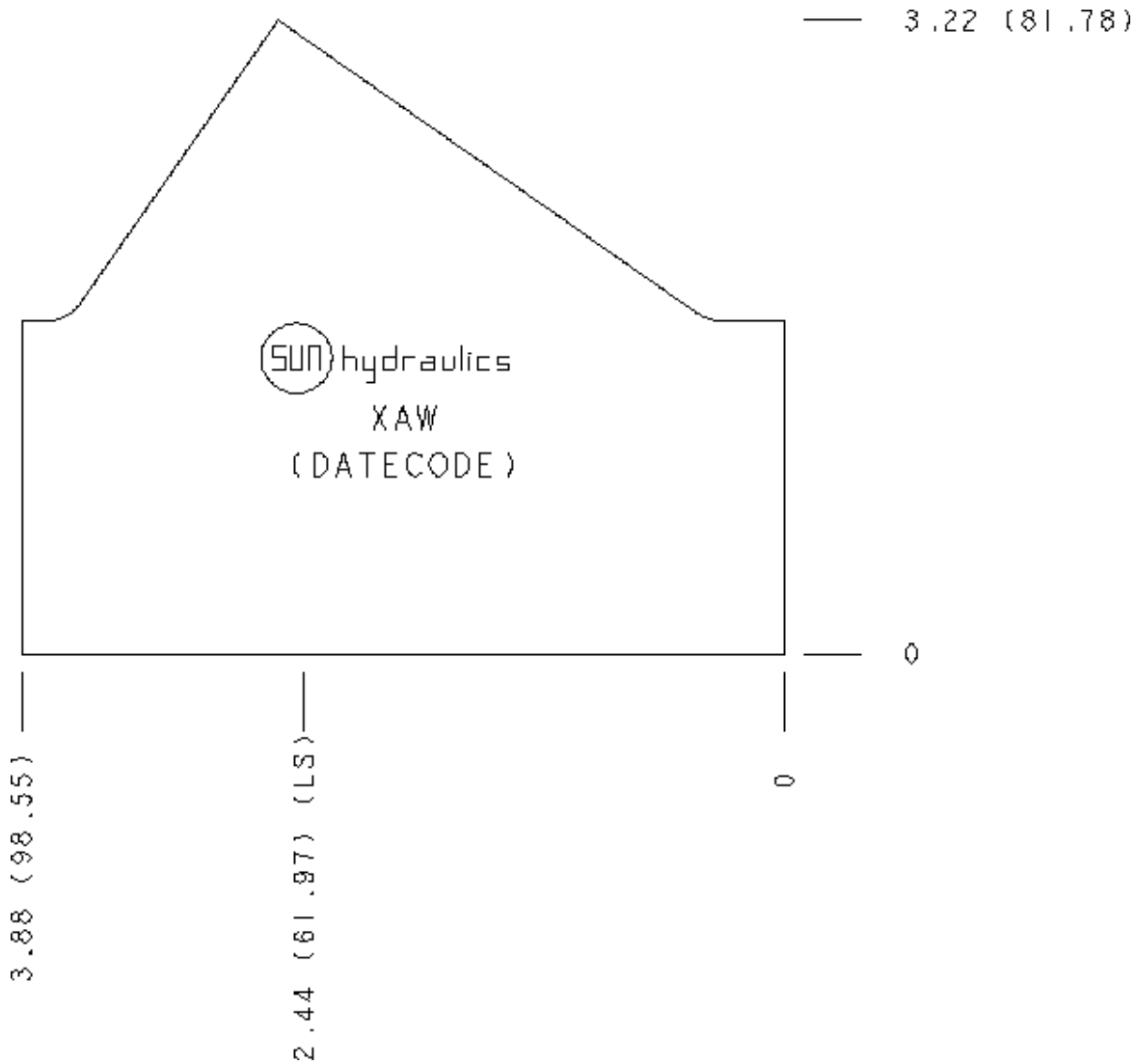
Face 6



Face 9



Face 10



Face 11

