

面板开孔图
Panel cut out

△配套HC650插芯使用时此开孔宽度为43mm,

Match with insert HC650, the distance between the two openings is 43mm,

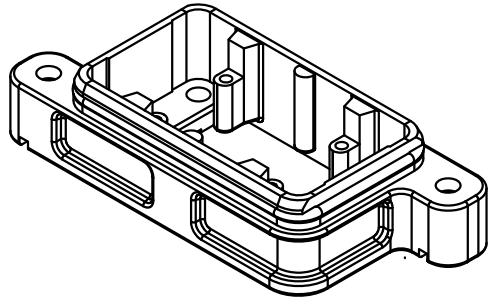
技术参数:

- 材料: 压铸铝
- 表面处理: 粉末喷涂
- 颜色: RAL 9005 (黑色)
- 温度范围: -40℃ - +125℃
- 防护等级: IP68/IP69K
- 出线方向: 底部出线
- 密封元件: NBR

Technical specification:

- Material: aluminium die-cast
- Surface: powder-coated
- Colour: RAL 9005(black)
- Temperature range: -40℃ - +125℃
- Degree of protection: IP68/IP69K
- Cable entry: bottom entry
- Hoods/Housings sealing: NBR

Note: △配套额定电流为650A的插芯 (HC650-M, HC650-F, HC650-MC, HC650-FC) 时, 该开孔尺寸宽度为43mm, 若面板强度足够, 能保证产品安装时, 面板不会出现变形, 适配其他规格的插芯时, 该开孔宽度亦可采用43mm. match with inserts with rated current 650A (HC650-M, HC650-F, HC650-MC, HC650-FC), and the distance between the two openings is 43 mm. If the panel is strong enough to avoid distortion during assembly, the distance between the two openings still could be 43 mm, when the shell matches with other inserts.



						表面处理 Finish	-			图号 Drawing No.	-
						材料 Material	-			产品代号 Part Code	HP6B/H-BK-2H
标记 Mark	处数 Number	变更描述/Description			签名 Signature	日期 Date				产品料号 Part No.	1136063201001
	姓名/Name	日期/Date		姓名/Name	日期/Date	比例 Scale	版本 REV.	重量 Weight	数量 Qty.	产品名称 Part Name	-
绘图 Drawn	BQ LUO	30.04.2019	标准化 Stand.	-	-	2:1	V1.1	152g	-		
审核 Checked	HZ LAN	30.04.2019									
工艺 Process	-	-	批准 Approved	HQ ZHANG	30.04.2019	All Dimensions in mm Original Size DIN A 4			厦门唯恩电气有限公司 XIAMEN WAIN ELECTRICAL CO.LTD		