

Product specifications

Product Application:

- Switch mode Power Supply
- Welder
- Free Wheeling Diode
- Motor Controllers
- Converters
- Inverters
- Snubber Diode
- PFC

VRRM = 200V
IFAV = 70A(35A*2)
VF = 0.95V
TRR = 35ns

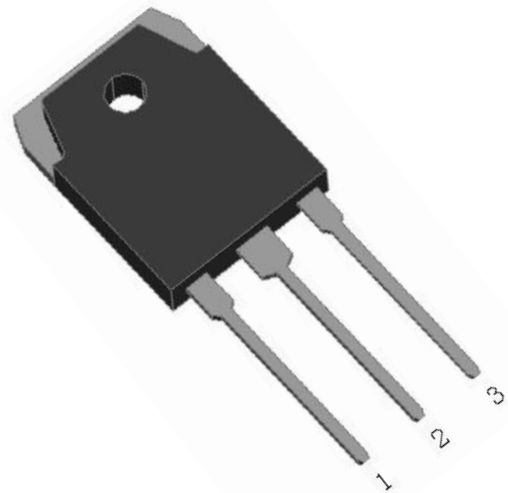
Product Features:

- Ultrafast Recovery Times
- Soft Recovery Characteristics
- Popular T0-3P Package
- Low Forward Voltage
- Low Leakage Current
- Avalanche Energy Rated

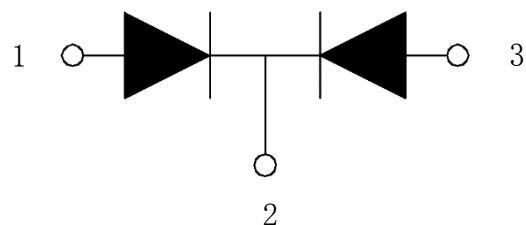
Product Benefits:

- Low Losses
- Low Noise Switching
- Cooler Operation
- Higher Reliability Systems
- Increased System Power Density

Package:



Circuit diagram



1- Anode
3- Anode
2- Cathode
Back of Case - Cathode

MAXIMUM RATINGS

All Ratings: Tc = 25° C unless otherwise specified.

Symbol	Characteristic / Test Conditions	TYP	UNIT
VR	Maximum D.C. Reverse Voltage	200	Volts
VRRM	Maximum Peak Repetitive Reverse Voltage		
IF(AV)	Maximum Average Forward Current (Tc = 100°C, Duty Cycle = 0.5)	70 (35*2)	Amps
IFSM	Non-Repetitive Forward Surge Current (TJ = 25°C, 10ms)	700	
TJ , TSTG	Operating and Storage Temperature Range	-55 to 150	° C
TL	Lead Temperature for 10 Sec	260	

STATIC ELECTRICAL CHARACTERISTICS

Symbol	Characteristic / Test Conditions	TYP	MAX	UNIT	
VF	Forward Voltage	IF = 35A, TJ = 25°C	0.95	1.1	Volts
		IF = 35A, TJ = 150°C	0.85	1.0	
IRM	Maximum Reverse Leakage Current	VR = 200V, TJ =25°C		10	μ A
		VR = 200V, TJ =150°C		500	
Trr	Reverse Recovery Time	IF=0.5A IRM=1A IRR=0.25A TC=25°C	35	45	ns
CJ	Junction Capacitance, VR =200V	25		pF	

THERMAL AND MECHANICAL CHARACTERISTICS

Symbol	Characteristic / Test Conditions	S2FD70B20 G	UNIT
Rθ JC	Junction-to-Case Thermal Resistance	0.8	°C/W
WT	Package Weight	6.7	g
Torque	Maximum Mounting Torque	1.1	N.m

TYPICAL PERFORMANCE CURVES

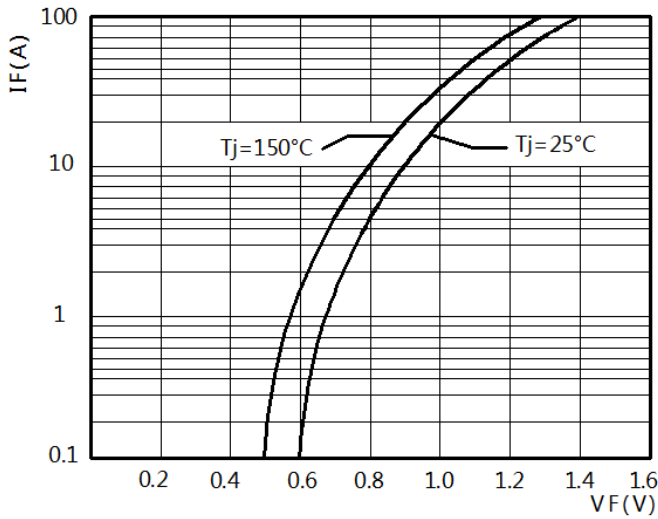


FIGURE 1. FORWARD CURRENT vs FORWARD VOLTAGE

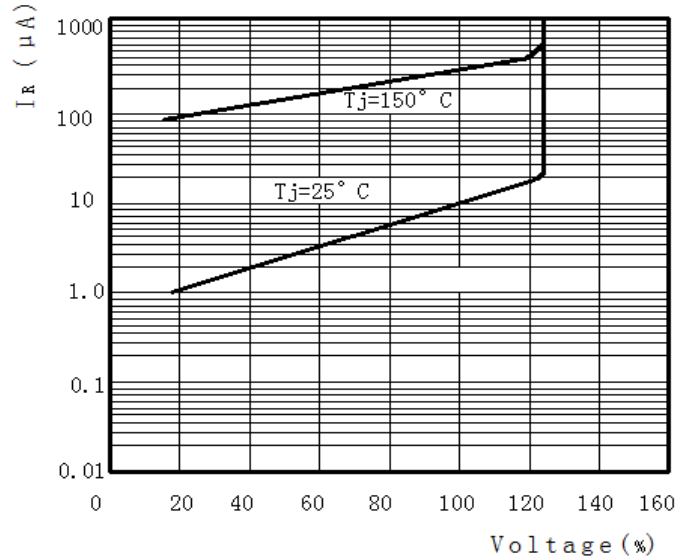


FIGURE 2. REVERSE CURRENT vs REVERSE VOLTAGE

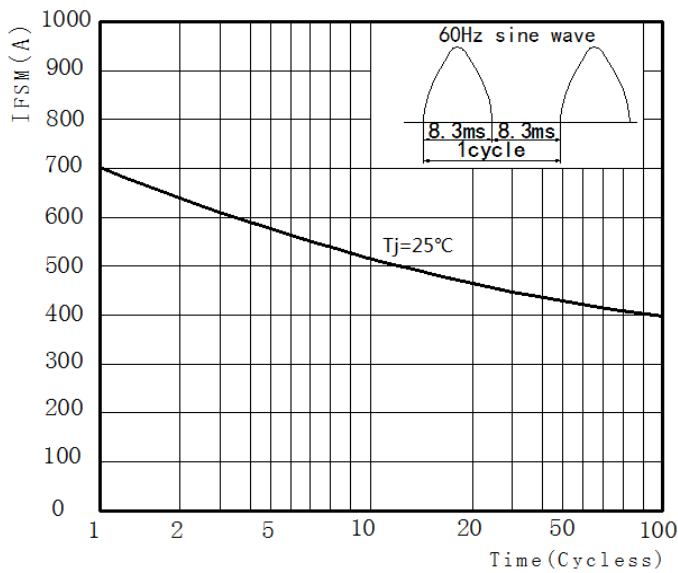


FIGURE 3. Peak Surge Forward Capability

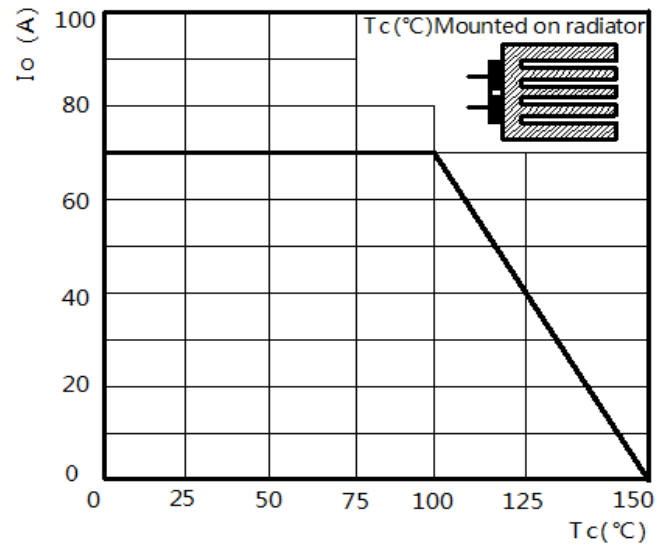
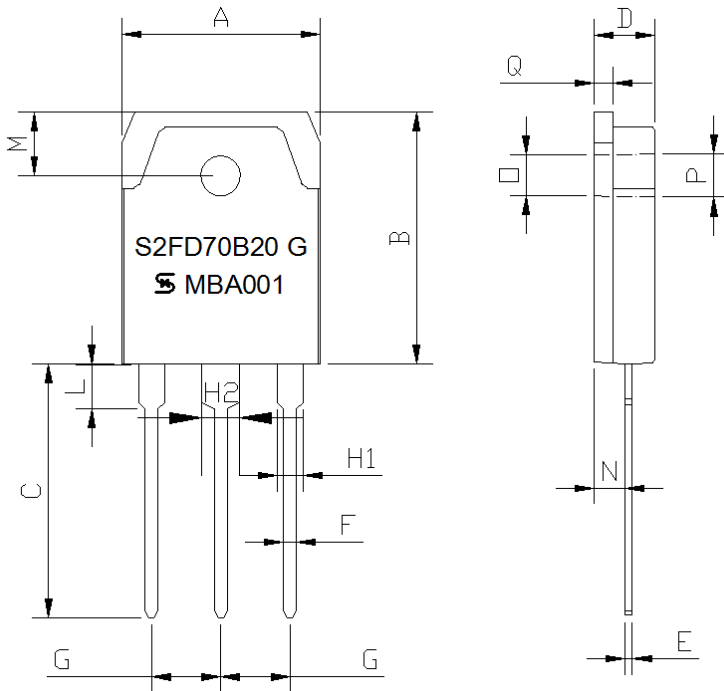


FIGURE 4. CURRENT DERATING CURVE

Dimensioned drawing (T0-3P)



Dim.	Millimeter		Inches	
	min	max	min	max
A	15.1	16.1	0.594	0.634
B	19.4	20.4	0.764	0.803
C	19	20	0.748	0.787
D	4.3	5.3	0.169	0.209
E	0.4	0.8	0.016	0.031
F	0.8	1.2	0.031	0.047
G	5.25	5.65	0.207	0.222
H1	1.8	2.2	0.071	0.087
H2	2.8	3.2	0.110	0.126
L	2.7	3.1	0.106	0.122
M	4.7	5.3	0.185	0.209
N	2.2	2.6	0.087	0.102
O	3	3.3	0.118	0.130
P	3.3	3.6	0.130	0.142

Marking

