

ADB 氣動增壓缸 氣動泵浦 單迴路

Air Pump . Single Circuit

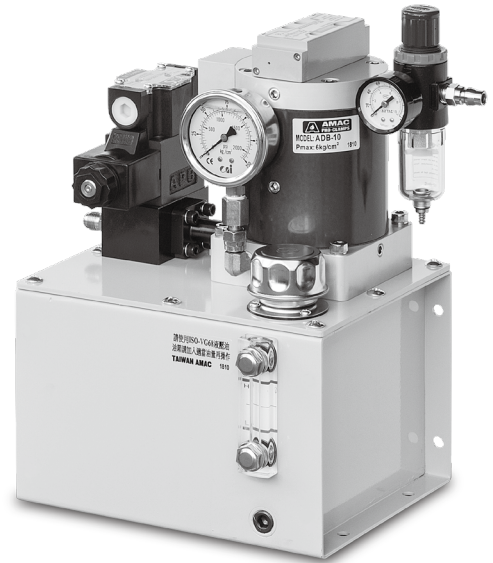


Air Drive Booster

• Pmax:6kg/cm²

產品簡介

- 利用空氣壓驅動產生增壓，依增壓倍數輸出油壓壓力，作為驅動油壓缸之動力源，流量大於一般空油增壓器連續式輸出增壓流量，作動缸無增壓行程之限制。
- 以空氣調整閥調整壓力，達到增壓倍數即停止驅動，油壓壓降時將會自動驅動補償壓力，特別適用於長時間油壓夾持之場合，節省能源，不產生油溫，經濟又方便。
- A 型：安裝 ISO 規格油路板及電磁閥，適用於單動或雙動油壓缸。
- B 型：附配管座 P、T 孔，可連接油壓手動閥操作油壓缸夾持。
- 油箱體積小節省空間，容易安裝與保養。



Product Introduction

- The booster pump is driven by air to output hydraulic pressure for a power source for hydraulic cylinder. Its flow rate is bigger than that of a conventional booster. Continuous pressure boosting and no limitation of booster stroke for the acting cylinder.
- Pressure adjustment is made by an air pressure regulation valve. Once pressure reaches the desired value, drive stops immediately. In case pressure drops, the pump will compensate pressure automatically. The series is especially ideal for long time hydraulic clamping application. Also features energy saving, no oil temperature growth, economical and convenient.
- A Type: Equipped with ISO approved manifold and solenoid valve. Applicable for single-acting or double-acting hydraulic cylinder.
- B Type: Equipped with pipe block with P.T ports, permitting for connecting to a manual control valve for operation control.
- Reduced oil tank volume for space saving and convenient installation.

特性資料 Specification

使用流體	Fluid	已濾清之壓縮空氣 Filtered air						
最大操作壓力	Max operation pressure	6kg/cm ²						
增壓倍數	Boost pressure rate	06	10	13	18	25	44	
空氣供給	Air pressure supply	6kg/cm ²						
油壓吐出量	Hydraulic fluid expelled	l/min	15.1	10.8	8.9	5.9	4.9	3.2
油箱容量	Oil tank capacity	5 l						
使用液壓油	Oil	ISO-VG68						

訂購標示法 Order Code

ADB - 25 - A - 2B2 - AC110V - MBRV

① ② ③ ④ ⑤ ⑥

①	系列別 Series	ADB	
②	增壓倍數 Boost pressure rate	06, 10, 13, 18, 25, 44	
③	控制型式 Control type	A	ISO 規格油路板 Manifold, magnet valve
		B	配管座 P.T 孔 Distributing tube seat P.T. port
④	換向閥型式 Direction change valve type	單頭 Single Head : 2B2-02 雙頭 Double Head : 2D2-02, 3C2-02	
⑤	線圈型式 Coil type	AC110V, AC220V, DC24V	
⑥	減壓閥型號 The pressure reducing valve model	MBRV-02P	

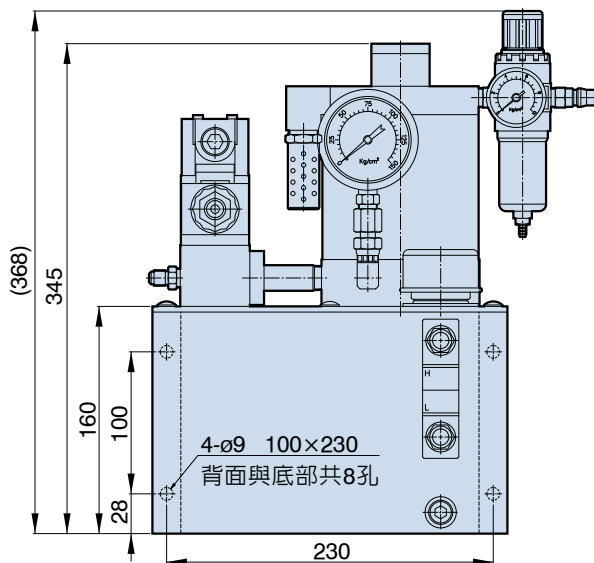
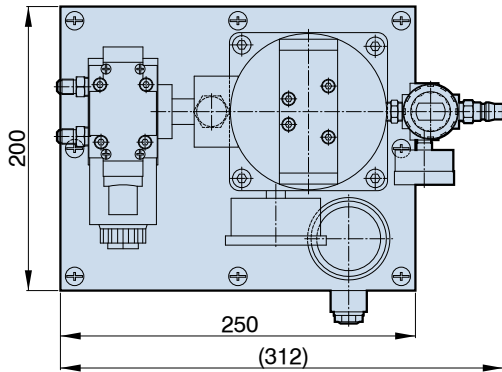
ADB 氣動增壓缸 氣動泵浦 單迴路

Air Pump . Single Circuit

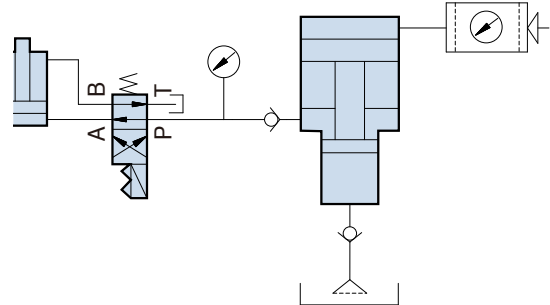


Air Drive Booster

• Pmax:6kg/cm²



迴路圖 Circuit diagram



注意事項

- 請使用 ISO-VG68 液壓油，油箱請加入適當油量再操作。
- 定期檢查液壓油的質量，以免影響正常運作與零件壽命。
- 氣動部份無法運作時，將氣動閥拆下不需分解，內部方向切換零件用氣槍清理。
- 氣壓缸鋁本体圓周上有一薄型銅消音器，如有粉塵異物吸入造成阻塞，將會阻礙氣壓缸活塞自動運作，必需拆下清理或換新。
- 氣動部份不停運作，油壓部份無法增壓，表示油封已損壞，造成內漏狀況。

Notice

- Use ISO-VG68 hydraulic oil. Be sure to fill proper amount of hydraulic oil into the oil tank before operation.
- Periodically inspect hydraulic oil quality to prevent affection on normal operation and parts life.
- In case air system can't work, remove the air valve but do not break down. Use an air gun to clean the internal direction change ports.
- There is a thin type bronze silencer on the aluminum body of air cylinder. If it is blocked by suction of powder dust, it may impede the motion of the piston of air cylinder. When such problem occurs, remove it for cleaning or replacing.
- If air system works continuously, but hydraulic pressure can't boost, it means oil seal is damaged causing internal leakage.

ADB 氣動增壓缸 氣動泵浦 三迴路



Air Drive Booster

• Pmax:6kg/cm²

產品簡介

- 增壓缸本體與單迴路作動功能相同，輸出油壓壓力分為三迴路，每迴路 P 孔內藏單向閥，確保每迴路個別運作。
- 運用於多迴路自動化工裝夾具，個別控制操作夾具油壓缸。
- 選購附件：油箱液位開關 EP-125FA

疊加式減壓閥 MBRV-02P-1L:3~35kg/cm²
 最高使用壓力 MBRV-02P-2L:7~70kg/cm²
 210 Kg/cm² MBRV-02P-3L:35~140kg/cm²

壓力傳感器：台灣 壓力傳感器：義大利
 JC-PS-02L:10~230kg/cm² PS-021:20~50kg/cm²
 JC-PS-02LL:5~60kg/cm² PS-022:50~80kg/cm²
 PS-023:50~150kg/cm²



Product Introduction

- The body of the booster cylinder has the same actuating function as the single circuit. The output hydraulic pressure includes three circuit. The P port on each circuit is equipped with a single direction valve, so that each circuit can work individually.
- It is applicable for automated clamp in multi-circuit, which can independently control hydraulic cylinder of clamp.
- Optional Accessories: Fluid level switch in oil tank EP-125FA

Modular pressure reducing valve MBRV-02P-1L:3~35kg/cm²
 Max operation pressure 210kg/cm² MBRV-02P-2L:7~70kg/cm²
 MBRV-02P-3L:35~140kg/cm²

Pressure sensor : Made in TAIWAN Pressure sensor : Made in ITALY
 JC-PS-02L:10~230kg/cm² PS-021:20~50kg/cm²
 JC-PS-02LL:5~60kg/cm² PS-022:50~80kg/cm²
 PS-023:50~150kg/cm²



特性資料 Specification

使用流體	Fluid	已濾清之壓縮空氣 Filtered air						
最大操作壓力	Max operation pressure	6 kg/cm ²						
增壓倍數	Boost pressure rate	06	10	13	18	25	44	
空氣供給	Air pressure supply	6kg/cm ²	15.1	10.8	8.9	5.9	4.9	3.2
油壓吐油量	Hydraulic fluid expelled	ℓ/min						
油箱容量	Oil tank capacity	10 ℓ						
使用液壓油	Oil	ISO-VG68						

訂購標示法 Order Code

ADB - 25 A3 - 2B2 - AC110V - MBRV

↑ ↑ ↑ ↑ ↑ ↑

① ② ③ ④ ⑤ ⑥

①	系列別 Series	ADB
②	增壓倍數 Boost pressure rate	06, 10, 13, 18, 25, 44
③	控制型式 Control type	ISO 規格三迴路油路板 Three-circuit manifold plate with ISO specification.
④	換向閥型式 Direction change valve type	單頭 Single Head : 2B2-02 雙頭 Double Head : 2D2-02, 3C2-02
⑤	線圈型式 Coil type	AC110V, AC220V, DC24V
⑥	減壓閥數量 Quantity of pressure reducing valve	MBRV1, MBRV2, MBRV3

附註：A2 二迴路，A3 三迴路共用油箱
 Remark: A2 two circuits and A3 three circuits that commonly use an oil tank.

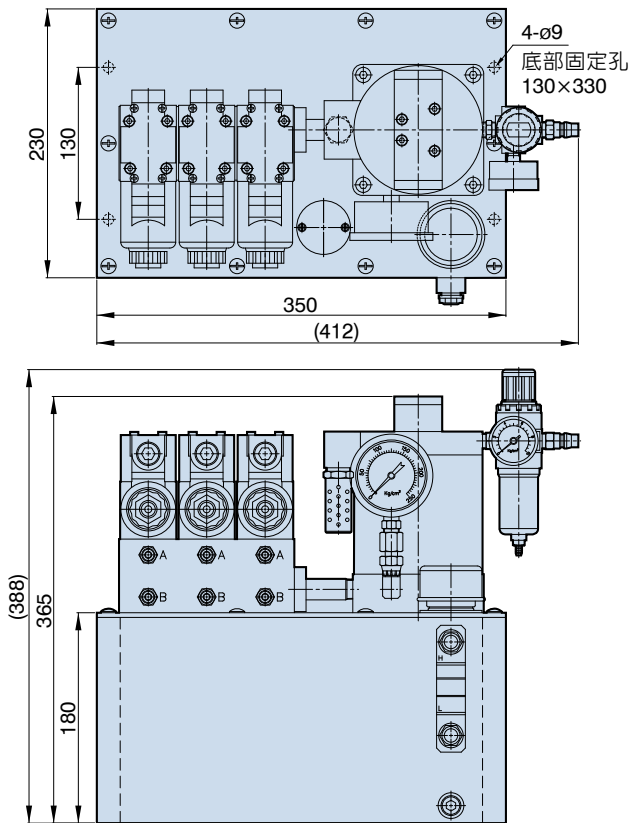
ADB 氣動增壓缸 氣動泵浦 三迴路

Air Pump . Three Circuit

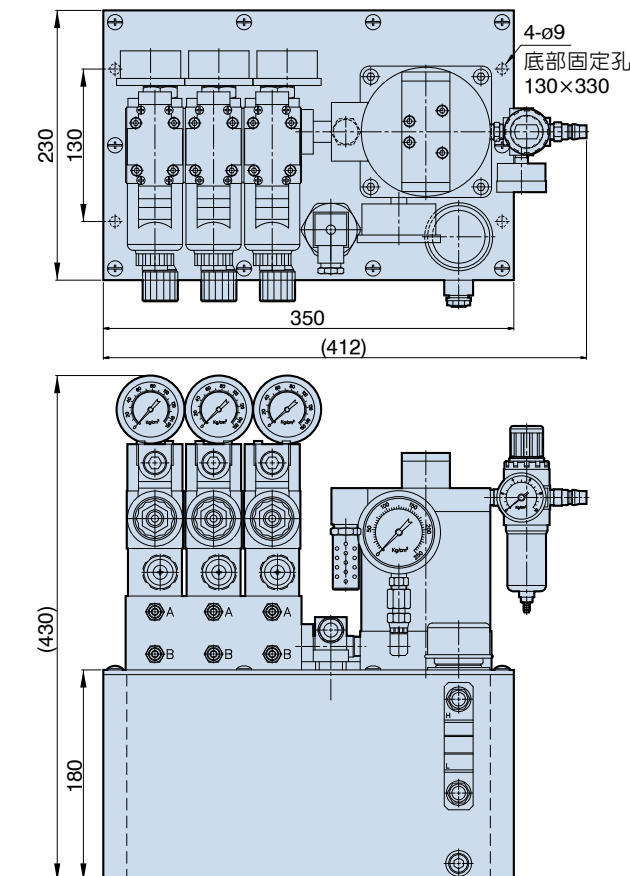
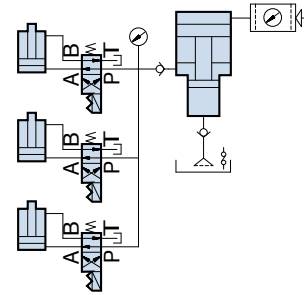


Air Drive Booster

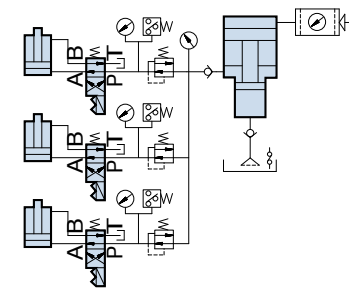
• Pmax:6kg/cm²



迴路圖 Circuit diagram



迴路圖 Circuit diagram



ADB 氣動增壓缸 氣動泵浦 四迴路 Air Pump . Four Circuit



Air Drive Booster

• Pmax:6kg/cm²

產品簡介

- 增壓缸本體與單迴路作動功能相同，輸出油壓壓力分為四迴路，每迴路 P 孔內藏單向閥，確保每迴路個別運作。
- 運用於多迴路自動化工裝夾具，個別控制操作夾具油壓缸。
- 選購附件：油箱液位開關 EP-125FA

疊加式減壓閥 MBRV-02P-1L:3~35kg/cm²
 最高使用壓力 MBRV-02P-2L:7~70kg/cm²
 210 Kg/cm² MBRV-02P-3L:35~140kg/cm²

壓力傳感器：台灣 壓力傳感器：義大利
 JC-PS-02L:10~230kg/cm² PS-021:20~50kg/cm²
 JC-PS-02LL:5~60kg/cm² PS-022:50~80kg/cm²
 PS-023:50~150kg/cm²



Product Introduction

- The body of the booster cylinder has the same actuating function as the single circuit. The output hydraulic pressure includes four circuit. The P port on each circuit is equipped with a single direction valve, so that each circuit can work individually.
- It is applicable for automated clamp in multi-circuit, which can independently control hydraulic cylinder of clamp.
- Optional Accessories: Fluid level switch in oil tank EP-125FA

Modular pressure reducing valve MBRV-02P-1L:3~35kg/cm²
 Max operation pressure 210kg/cm² MBRV-02P-2L:7~70kg/cm²
 MBRV-02P-3L:35~140kg/cm²

Pressure sensor : Made in TAIWAN Pressure sensor : Made in ITALY
 JC-PS-02L:10~230kg/cm² PS-021:20~50kg/cm²
 JC-PS-02LL:5~60kg/cm² PS-022:50~80kg/cm²
 PS-023:50~150kg/cm²

特性資料 Specification

使用流體	Fluid	已濾清之壓縮空氣 Filtered air						
最大操作壓力	Max operation pressure	6 kg/cm ²						
增壓倍數	Boost pressure rate	06	10	13	18	25	44	
空氣供給	Air pressure supply	6kg/cm ²	15.1	10.8	8.9	5.9	4.9	3.2
油壓吐油量	Hydraulic fluid expelled	ℓ/min						
油箱容量	Oil tank capacity	12 ℓ						
使用液壓油	Oil	ISO-VG68						

訂購標示法 Order Code

ADB - 25 A4 - 2B2 - DC24V - MBRV

① ② ③ ④ ⑤ ⑥

①	系列別 Series	ADB
②	增壓倍數 Boost pressure rate	06, 10, 13, 18, 25, 44
③	控制型式 Control type	ISO 規格四迴路油路板 Four-circuit manifold plate with ISO specification.
④	換向閥型式 Direction change valve type	單頭 Single Head : 2B2-02 雙頭 Double Head : 2D2-02, 3C2-02
⑤	線圈型式 Coil type	AC110V, AC220V, DC24V
⑥	減壓閥數量 Quantity of pressure reducing valve	MBRV1, MBRV2, MBRV3, MBRV4

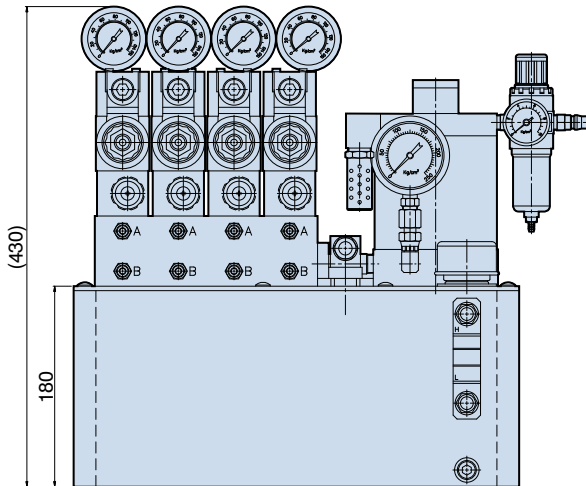
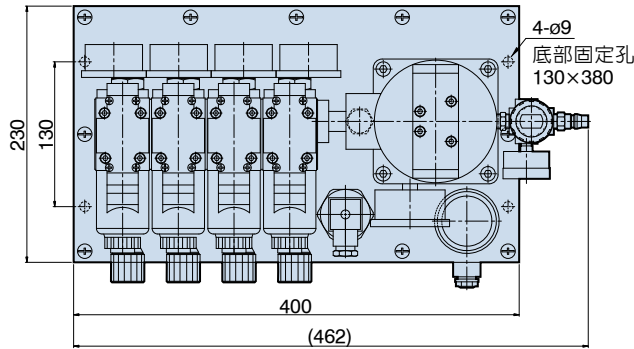
ADB 氣動增壓缸 氣動泵浦 四迴路

Air Pump . Four Circuit



Air Drive Booster

• Pmax:6kg/cm²



迴路圖 Circuit diagram

