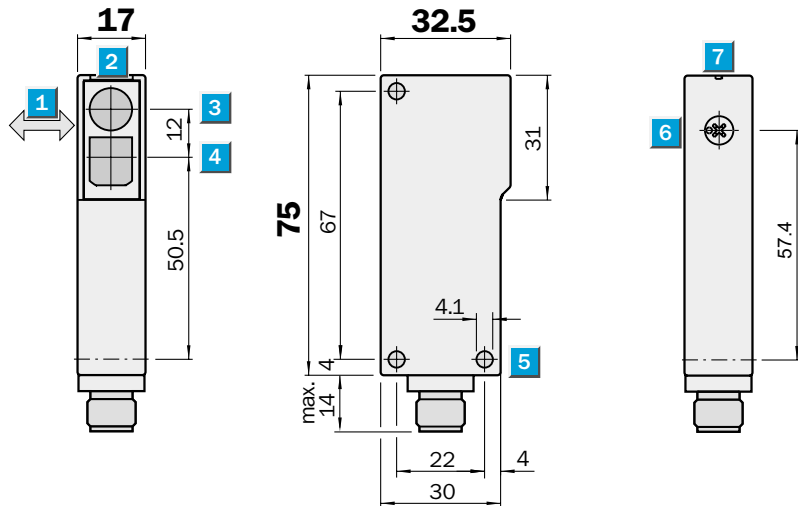

Scanning distance
 80...500 mm

Photoelectric proximity switches

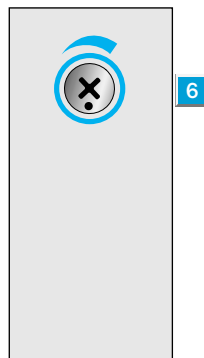
- Infrared light
- Adjustable background blanking

Dimensional drawing



Adjustments possible

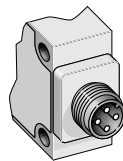
WT 14-P 420



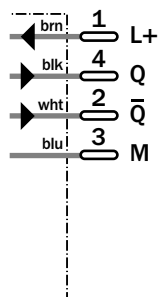
- 1 Standard direction of the material being scanned
- 2 Status indicator
- 3 Centre of optical axis, sender
- 4 Centre of optical axis, receiver
- 5 Mounting hole \varnothing 4.1 mm
- 6 Scanning distance adjustment
- 7 Alignment sight

Connection type

WT 14-P 420



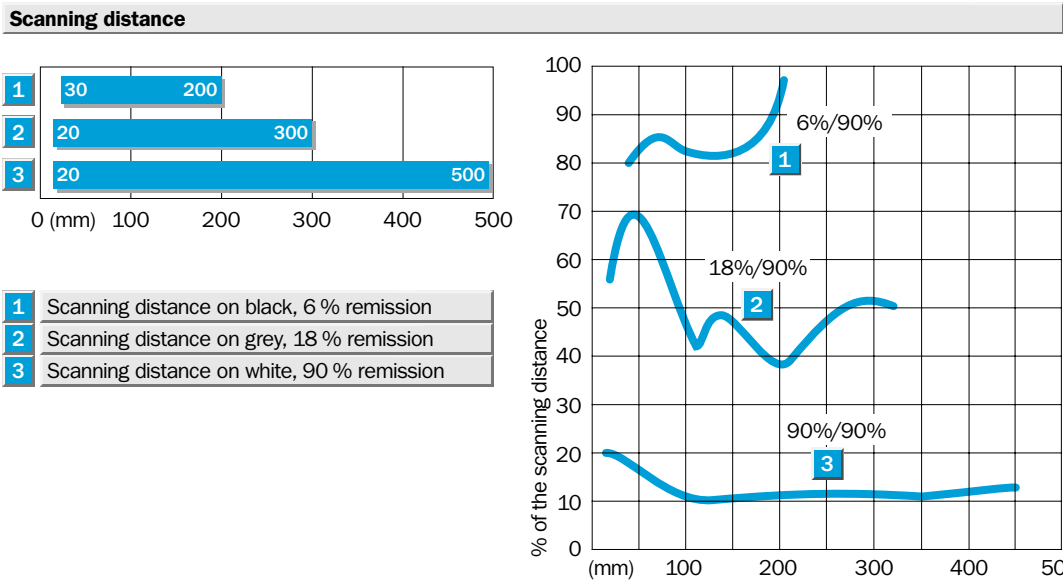
4-pin, M 12



Accessories	page
Cable receptacles	496
Mounting brackets	510

Technical data		WT 14-	P 420										
Scanning distance , max. typical	80...500 mm, adjustable												
Light source¹⁾, light type	LED, infrared light												
Light spot diameter	15 mm at 300 mm												
Supply voltage V_S	24 V DC ($\pm 25\%$)												
Ripple ²⁾	$\leq 5 V_{SS}$												
Current consumption ³⁾	≤ 30 mA												
Switching outputs	PNP, Q and \bar{Q}												
Output current I_A max.	100 mA												
Response time ⁴⁾	2.5 ms												
Max. switching frequency ⁵⁾	200/s												
Connection type	Plug, M 12, 4-pin												
VDE protection class⁶⁾	<input type="checkbox"/>												
Circuit protection⁷⁾	A, B, C												
Enclosure rating	IP 65												
Ambient temperature T_A	Operation $-25\text{ }^\circ\text{C} \dots +60\text{ }^\circ\text{C}$ Storage $-40\text{ }^\circ\text{C} \dots +70\text{ }^\circ\text{C}$												
Weight	Approx. 40 g												
Housing material	ABS												

- 1) Average service life 100,000 h at $T_A = +25\text{ }^\circ\text{C}$
- 2) May not exceed or fall short of V_S tolerances
- 3) Without load
- 4) Signal transit time with resistive load
- 5) With light/dark ratio 1:1
- 6) Reference voltage 50 V DC
- 7) A = V_S connections reverse-polarity protected
B = Output Q and \bar{Q} short-circuit protected
C = Interference pulse suppression



Order information	
Type	Part no.
WT 14-P 420	1 016 659