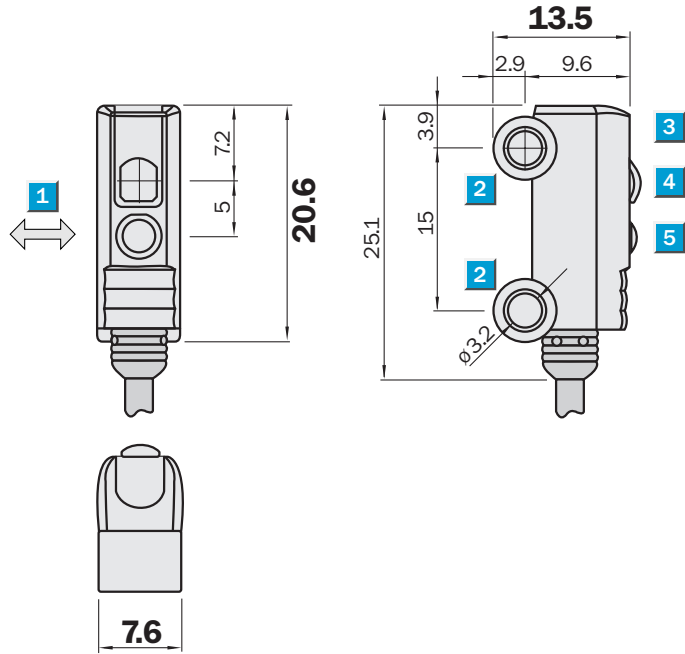


	Scanning distance 1 ... 15 mm
	Scanning distance 1 ... 30 mm
Photoelectric proximity switch	

- A focused, laser-like light spot makes the most precise detection jobs possible
- Insensitive to interference from critical backgrounds
- Sturdy housing with metal sleeves for M 3 bolts

Dimensional drawing



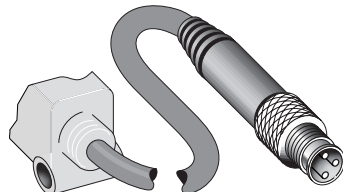
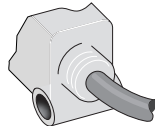
- 1 Standard direction of material being scanned
- 2 Mounting hole \varnothing 3.2 mm
- 3 LED signal strength indicator
- 4 Optical axis, receiver
- 5 Optical axis, sender



Connection types

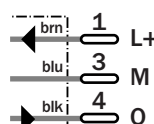
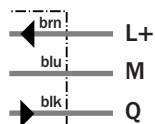
WT 2S-P111
WT 2S-P131
WT 2S-N111
WT 2S-N131

WT 2S-P211
WT 2S-P231



3 x 0.09 mm², \varnothing 2.4 mm

3-pin, M 8, 200 mm



Accessories

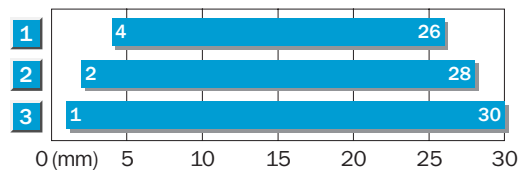
Connectors
Mounting systems
Mounting set of screws ¹⁾

¹⁾ included with delivery

Technical data		WT 2S-	P 111	P 211	N 111	P 131	P 231	N 131				
Scanning distance (fix), typ.	1 ... 15 mm ¹⁾											
	1 ... 30 mm ¹⁾											
Background suppression from	18 mm											
	35 mm											
Light source²⁾, light type	Pin-Point LED, red light											
Light spot diameter	Approx. 1.0 mm at 15 mm											
	Approx. 4.5 mm at 30 mm											
	Approx. 1.2 mm at 8 mm											
	Approx. 2.5 mm at 15 mm											
Supply voltage V_s	10 ... 30 V DC ³⁾											
Ripple ⁴⁾	< 5 V _{pp}											
Current consumption ⁵⁾	< 20 mA											
Switching outputs	PNP, Q											
	NPN, Q											
Output current I _A max.	light-switching											
	< 50 mA											
Response time ⁶⁾	< 0.6 ms											
Max. switching frequency ⁷⁾	800/s											
Connection types	Cable ⁸⁾ , 2 m											
	Cable ⁸⁾ , 200 mm with plug											
VDE protection class⁹⁾	III											
Circuit protection¹⁰⁾	A, B, C											
Enclosure rating	IP 67											
Ambient temperature	Operation - 20 °C ... + 50 °C											
	Storage - 40 °C ... + 75 °C											
Weight	With cable 18 g											
	With plug 20 g											
Housing material	ABS, PMMA											

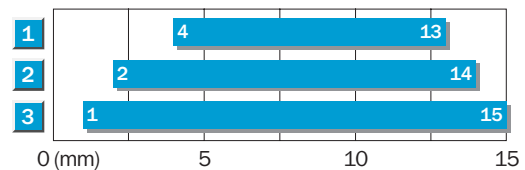
¹⁾ Tolerance ± 13%
²⁾ Average service life 75,000 h at T_A = + 25 °C
³⁾ Limit values
⁴⁾ May not exceed or fall short of V_s tolerances
⁵⁾ Without load
⁶⁾ Signal transit time with resistive load
⁷⁾ With light/dark ratio 1:1
⁸⁾ PVC, 2.4 mm Ø, do not bend below 0 °C
⁹⁾ Reference voltage 50 V
¹⁰⁾ A = V_s-connections reverse-polarity protected
 B = Output Q and Q̄ reverse-polarity protected
 C = Interference pulse suppression

Scanning distance, 30 mm background suppression



- 1 Scanning distance on black, 6 % remission
- 2 Scanning distance on grey, 18 % Remission
- 3 Scanning distance on white, 90 % Remission

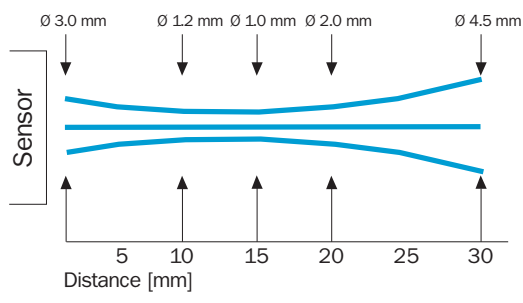
Scanning distance, 15 mm background suppression



Order information

Type	Part no.
WT 2S-P111	1 022 660
WT 2S-P131	1 022 661
WT 2S-P211	1 022 658
WT 2S-P231	1 022 659
WT 2S-N111	1 022 662
WT 2S-N131	1 022 663

Light spot diameter WT 2S 30 mm HGA



Light spot diameter WT 2S 15 mm HGA

