

单座调节阀 LPH11/113-、LPG11/113-

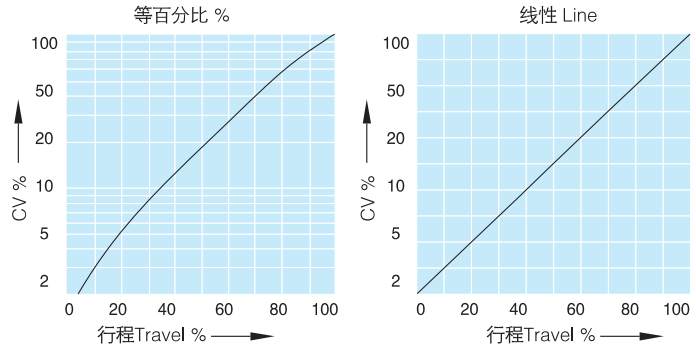


阀类代号 Code	执行机构 Actuator	作用形式 Action	出厂状态 Air Fail Position	控制方式 Control	结构形式 Structure	阀体材质 Body Material	密封材质 Sealing Material	阀芯材质 Ball Material	连接方式 Connection	口径 DN	压力 PN
1	气动 Pneumatic	S 单作用 Single-acting	1 常开 Normally Open	A 开关型 On-off	4 低温型 Low temperature type	A CF3M	P PTFE	A CF3M	1 法兰 Flange		
2	气动+手轮 Pneumatic & Handwheel	O 其它 Others	2 常闭 Normally Closed	B 调节型 Control	5 波纹管 Bellows type	B CF8M	Y FEP(F46)	B CF8M	5 对焊 Weld		
4	电动 AC220V Electric		4 保位 Held	C 智能型 Intelligent	6 高温型 High temperature type	C CF8	R BODY	C CF8	0 其它 Others		
5	电动 AC380V Electric		0 其它 Others	0 其它 Others	7 常规 Normal	D WCB	S Stellite	I CF3			
0	其它 Others				0 其它 Others	I CF3	3 Gr	L CE3MN			
						L CE3MN	4 WC	2 Ti			
						2 Ti	0 其它 Others	0 其它 Others			
						5 WCC					
						0 其它 Others					

LPH11-气动薄膜单座调节阀
Pneumatic diaphragm single seat control valve
LPG11-电子式电动单座调节阀
Electric single seat control valve
LPH113-气动薄膜衬氟单座调节阀
Pneumatic diaphragm lined single seat control valve
LPG113-电子式电动衬氟单座调节阀
Electric lined single seat control valve

温控阀代号: T, 加在型号后面。
Temperature control valve code: T, Please add it after the model no.

驱动方式 Driving Mode	电动、气动(1.4~4bar) Electric,Pneumatic
公称通径 DN	20 ~ 200mm
公称压力 PN	1.6 ~ 6.4MPa
适用温度 Applicable Temp.	PTFE & FEP(F46): -17 ~ +100°C 低温型 Low temp. type -196 ~ +100°C 高温型 High temp. type -17 ~ +566°C 常温型 Normal temp. type -17 ~ +230°C
流量特性 Flow characteristics	线性 Line、等百分比 %
回差 Hysteresis errors	小于全行程的1% Less than 1% of the whole travel
基本误差 Intrinsic errors	小于全行程的±1% Less than ±1% of the whole travel
可调范围 Adjustable range	50:1
可选附件 Optional	定位器、电磁阀、过滤调压阀、手轮 Positioner, Solenoid valve, Air filter regulator, Handwheel



流量系数 The flow coefficient

公称通径 DN	20	25	32	40	50	65	80	100	150	200
阀芯 Core			25/32	25/32/40	32/40/50	40/50/65	50/65/80	65/80/100	100/125/150	125/150/200
CV	0.01-10	0.01-14	10/17	10/17/24	17/24/44	24/44/68	44/68/99	68/99/175	175/275/360	275/360/640
行程 Travel	14.3	14.3	25	25	25	38	38	38	50	75

压差范围 Differential pressure range

Unit: 100KPa

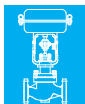
出厂状态 Failure position	供气压力 Air supply pressure	弹簧范围 Spring range	压差范围 Differential pressure range											
			阀芯 Core											
开启 Open	1.4	0.2-1.0	5.0-40	6.3	3.8	2.7	1.6	65	1.7	1.2	0.7	0.4	0.3	0.3
	1.6	0.2-1.0	25.2-40	31.6	19.3	13.7	7.8	8.8	6.2	3.5	2.2	1.4	1.5	
	4.0	0.8-2.4	40	40/94	40/57	40/41	21.7	26.5	18.7	10.5	6.7	4.1	4.5	
关闭 Close	1.4	0.2-1.0	5.0-40	6.3	3.8	2.7	1.6	1.7	1.2	0.7	0.4	0.3	0.3	
	2.8	0.8-2.4	40	40/44	27	14.1	11.1	12.3	8.7	4.9	3.1	1.9	2.1	

备注 Note :

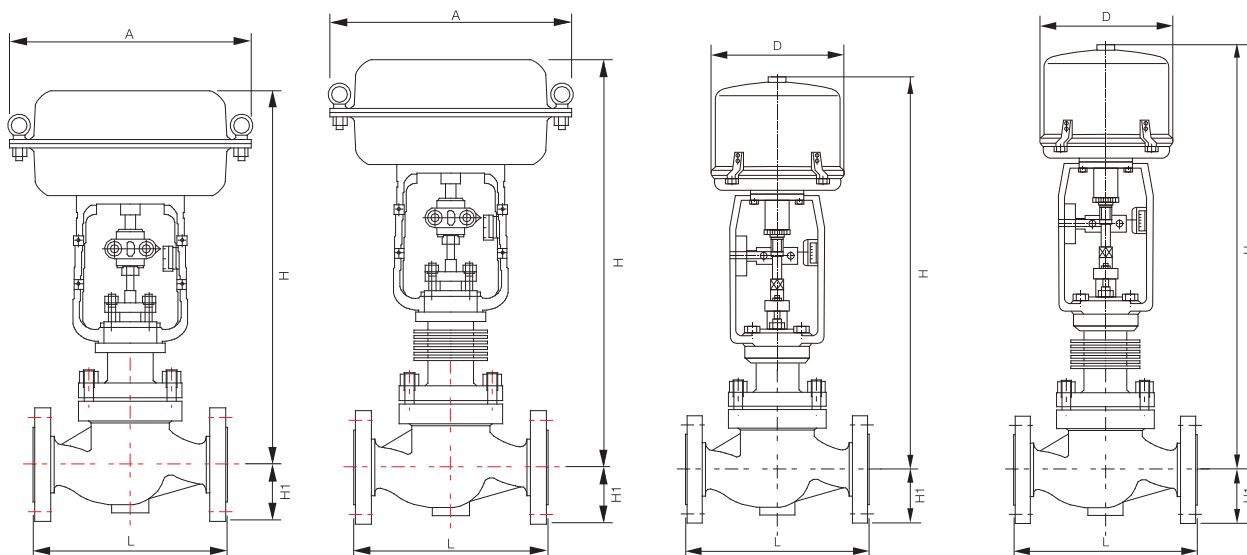
- 最大允许压差不超过最大工作压力
The maximum allowable differential pressure does not exceed the maximum pressure
- 同一格内, /前方数字表示阀常开允许压差, 后方数字表示阀全关允许压差。
The number in the front of '/' indicates the allowable differential pressure for valve totally opened, the rear numerals indicates the allowable differential pressure for valve totally closed.
- 以上允许压差均采用标准执行机构, 当压差不满足时, 也可增大执行机构。
The above allowable differential pressure under standard actuator, If the differential pressure is not enough then can use enlarged actuator.

单座调节阀的阀芯采用上导向结构, 通道呈S型。有压降小, 流量大, 可调范围广, 流量特性精度高的特点。执行器可采用气动薄膜式、电子式电动执行机构, 出厂时已经将零点量程调试完毕, 用户接通气源输入信号即可运转使用。
Valve core of single seat control valve adopts up guide structure, and the channel is S type. It has the characteristics of small pressure drop, large flow, wide adjustable range, and flow characteristics of high precision. Actuator can adopt pneumatic diaphragm and electronic electric actuator. When delivery, zero range has been debugged. After the user switches on air input signal, it can operated and be used.

- ※ 接线简单, 操作简易。
Wiring is simple, easy to operate.
- ※ 调节性能优异, 流量系数精确。
Regulation performance is excellent, flow coefficient is accurate.
- ※ 通道呈S型, 压力损失小, 流通能力强。
The channel is S type, Pressure loss is low, circulation ability is strong.
- ※ 有一定黏度和少量纤维的介质也可以选用。
It can be applied to medium with viscosity and a small amount of fiber.



单座调节阀 LPH11/113-、LPG11/113- Single seat Control Valve



气动薄膜单座调节阀外形尺寸 The dimension of pneumatic diaphragm single seat control valve

Unit:mm

SIZE		执行器 Actuator	H				H1	A
			常温 Normal temp.	高温 I High temp.	高温 II High temp.	高温 III High temp.		
20	3/4"	ZHA1R/D	375	525	685	900	40	230
25	1"	ZHA2R/D	450	600	760	975	40	281
32	1-1/4"	ZHA2R/D	500	665	780	1020	70	281
40	1-1/2"	ZHA2R/D	500	665	780	1020	70	281
50	2"	ZHA2R/D	500	670	785	1025	80	281
65	2-1/2"	ZHA3R/D	630	800	930	1180	88	363
80	3"	ZHA3R/D	635	810	955	1190	98	363
100	4"	ZHA3R/D	660	860	1020	1205	113	363
125	5"	ZHA3R/D	785	1020	1250	1385	170	363
150	6"	ZHA3R/D	785	1020	1250	1385	170	363
200	8"	ZHA4R/D	1090	1350	1580	1710	220	520

备注: R 气开式 D 气闭式 Remarks: R for air to open D for air to close

H 栏尺寸不包含手轮、定位器、加大执行器尺寸 The dimension of H does not contain a hand wheel, positioner, enlarged actuator

L: 阀体长度 Body length

Unit:mm

SIZE		ANSI 125 FF	JIS 16K RF	ANSI 300 RF	ANSI 600 RF	JIS 16K	JIS 20K	JIS 30K	JIS 40K
		ANSI 150 RF		JIS 20/30K RF	JIS 40K RF	沟槽 Groove 嵌入 Embedding			
		JIS 10K FF RF		JIS 30K RF	PN64				
		PN16 RF		PN40 RF					
20	3/4"	184	190	194	206	/	198	208	/
25	1"	184	190	197	210	/	198	212	/
32	1-1/4"	200	/	/	/	/	/	/	/
40	1-1/2"	222	231	235	251	235	236	248	251
50	2"	254	263	267	286	265	267	276	286
65	2-1/2"	276	288	292	311	290	292	303	311
80	3"	298	313	317	337	310	317	326	337
100	4"	352	364	368	394	360	368	378	394
125	5"	410	/	/	/	/	/	/	/
150	6"	451	465	473	508	475	473	486	508
200	8"	543	560	568	610	570	568	580	610

电子式电动单座调节阀外形尺寸 The dimension of electric single seat control valve

Unit:mm

SIZE		L			H				H1			D 普通/隔爆 Normal/ Flameproof	重量 (kg) Weight	
					常温 Normal temperature		高温 High temperature						PN1.6	PN4.0
		PN1.6	PN4.0	PN6.4	PN1.6 PN4.0	PN6.4	PN1.6 PN4.0	PN6.4	PN1.6	PN4.0	PN6.4			
20	3/4"	181	194	206	547	558	700	706	52	52	65	260/280	14	18
25	1"	185	197	210	564	575	712	724	57	57	70		15	19
40	1-1/2"	222	235	251	720	730	889	901	75	75	85	290/310	26	35
50	2"	254	267	286	730	739	902	908	82	82	90		30	40
65	2-1/2"	276	292	311	845	854	1025	1035	92	92	102	360	34	53
80	3"	298	317	337	867	870	1045	1051	100	100	107		42	65
100	4"	352	368	394	890	900	1070	1090	110	117	125	52	86	
150	6"	451	473	508	1190	1220	1330	1337	142	150	172	152	206	
200	8"	600	600	650	1258	1350	1380	1390	170	187	207	220	280	