



环保蝶阀 LPB11- Green Butterfly Valve



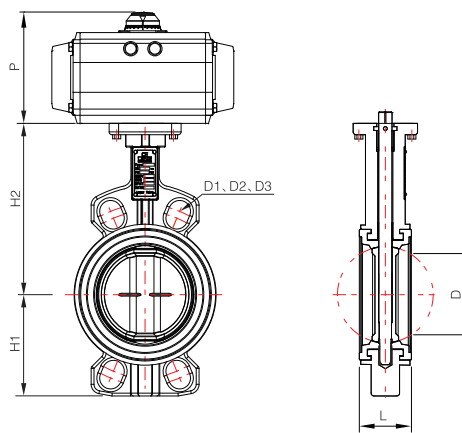
LAPAR

阀类代号 Code	执行机构 Actuator	作用形式 Action	出厂状态 Air Fail Position	控制方式 Control	结构形式 Structure	阀体材质 Body Material	密封材质 Sealing Material	阀板材质 Disc Material	连接方式 Connection	口径 DN	压力 PN
LPB11-	1 气动 Pneumatic 2 气动+手轮 Pneumatic & Handwheel 3 电动 DC24V Electric 4 电动 AC220V Electric 5 电动 AC380V Electric 7 手柄 Handle 8 涡轮 Turbine 9 液动 Hydraulic pressure 0 其它 Others	D 双作用 Double-acting S 单作用 Single-acting 0 其它 Others	1 常开 Normally Open 2 常闭 Normally Closed 3 无固定 Flexible 4 保位 Held 0 其它 Others	A 开关型 On-off B 调节型 Control C 智能型 Intelligent 0 其它 Others	1 A型 A Type 2 LT型 LT Type 6 两块式 Two-pieces 0 其它 Others	B CF8M C CF8 D WCB E A395 6 A126 8 ADC12 0 其它 Others	F Viton GF K EPT N NBR O EPDM U FPM/Viton B X CR Z SI 0 其它 Others	A CF3M B CF8M C CF8 L CE3MN M B148 J A395+Nylon 2 A395+Ni 5 A395+Zinc 0 其它 Others	1 法兰 Flange 2 对夹 Wafer 0 其它 Others		

LPB16- 伸缩蝶阀 Telescopic butterfly valve



驱动方式 Driving Mode	电动、气动(5~7bar) Electric,Pneumatic
公称口径 DN	40 ~ 600mm (定制 Customized 25~32、700~1200mm)
公称压力 PN	1.0 ~ 1.6MPa (定制 Customized 2.5MPa LT 型)
适用温度 Applicable Temp.	NBR & CR: -29 ~ +80°C / EPDM: -29 ~ +100°C EPT(食品级): -29 ~ +120°C / FPM & SI: -29 ~ +150°C
适用介质 Medium	气体、水、油 Gas,Water,Oil
可选附件 Optional	限位开关、定位器、电磁阀、过滤调压阀、手轮 Limit switch,Positioner,Solenoid valve,Air filter regulator,Handwheel
连接标准 Connection Type	GB9113.1,ASME B 16.5,JIS B2211



GB PN10/16 ASME CLASS150

SIZE	L	D	D1	D2	D3	H1	H2
40	1-1/2"	33	34	110	110	98.5	120
50	2"	43	39	125	125	120.5	143
65	2-1/2"	46	55	145	145	139.5	155
80	3"	46	69	160	160	152.5	162
100	4"	52	91	180	180	190.5	181
125	5"	56	115	210	210	216	197
150	6"	56	140	240	240	241.5	210
200	8"	60	186	295	295	298.5	240
250	10"	68	239	350	355	362	286
300	12"	78	288	400	410	432	309
350	14"	78	325	460	470	476	329
400	16"	102	375	515	525	539.5	361
450	18"	114	423	565	585	578	393
500	20"	127	473	620	650	635	427
600	24"	154	560	725	770	749.5	492

P: 请参考执行器配置表 Please refer to the actuator configuration table

备注 Note: D1:PN10、D2:PN16按照 GB9113.1制定 D1:PN10、D2:PN16 is designed to meet GB9113.1 D3按照 ANSI 150 B16.5制定 D3 is designed to meet ANSI 150 B16.5
DN300及以上蝶阀的配对法兰尺寸请参考P30。Matching flanges of greater than or equal to 300mm butterfly valve refer to page 30.

蝶阀体积小、重量轻、口径越大相对其他阀更经济实惠。蝶阀处于完全开启位置时，蝶板厚度是介质流经阀体的唯一的阻力，因此通过该阀门所产生的压力降很小，当开启度在大约15度至70度之间时，又能进行灵敏的流量控制，因此大口径的流量调节，蝶阀具有较大的优势。Butterfly valve is small in size, light in weight, and has bigger diameter, and is more economical and practical than other valves. When butterfly valve is in the fully open position, the thickness of butterfly plate is the only resistance of the medium flowing through the body. So the pressure dropped by the valve is small. When it is open in about 15 degrees to 70 degrees, it can perform a sensitive flow control. For the flow control of large caliber, butterfly valve has great advantage.

※ 蝶板流线型设计，蝶板密封面有多种压力等级可供选择，最大延长使用寿命。Butterfly plate is designed with flow linear. Seal face of butterfly plate has a variety of classes to be chosen. It can prolong the service life at the largest extent.
※ 阀座密封凸面特殊设计，避免长时间不操作而造成卡死现象。The special design of seat sealing convex can avoid stuck phenomenon caused by no operation for a long time.
※ 阀座无靠背设计，扭矩更轻，也方便用户自行更换阀座。The seat design has no back of a chair; the torque is lighter, which is also convenient for the user to replace the valve seat.