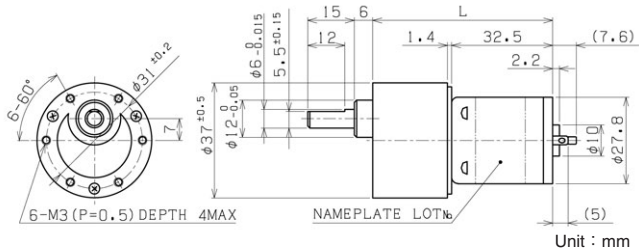


# φ37 齿轮电机 Gear Motor

# 铁芯电机 Iron Core Motor

铁芯电机 Iron Core Motor NCB×× page14

直齿齿轮 Spur Gearhead RB-35V page64



Unit : mm

RB-35VM-NCB02-24 DC24V 启动电流 Starting current 1670mA

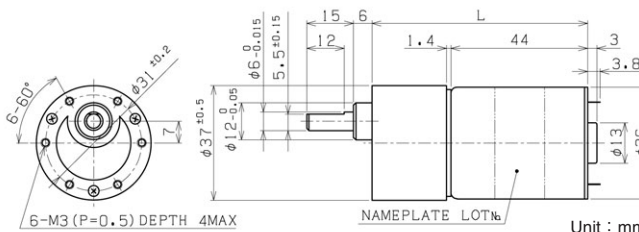
减速比 Reduction Ratio (1/i)	无负荷 回转速 No-Load Speed min <sup>-1</sup>	额定 回转速 Rated Speed min <sup>-1</sup>	额定扭矩 Rated Torque			启动 扭矩 Starting Torque mNm	長さ(L) Length mm	回 转 方 向 Direction of rotation
			mNm	kg·cm	oz·in			
32	332	256	147	1.5	20.8	(642)	55.4	CW
42	257	196	177	1.8	25.0	(746)	57.9	CCW
65	166	127	275	2.8	38.9	(1171)	57.9	CCW
94	115	87.2	402	4.1	57.0	(1663)	57.9	CCW
121	88.5	67.5	461	4.7	65.3	(1943)	60.4	CW
188	57.3	46.1	588	6.0	83.4	(3008)	60.4	CW
273	39.5	34.2	588	6.0	83.4	(4382)	60.4	CW
353	30.5	27.0	588	6.0	83.4	(5124)	62.9	CCW
546	19.8	18.3	588	6.0	83.4	(7762)	62.9	CCW
792	13.6	12.9	588	6.0	83.4	(11424)	62.9	CCW

RB-35VM-NCB01-24 DC24V 启动电流 Starting current 1160mA

减速比 Reduction Ratio (1/i)	无负荷 回转速 No-Load Speed min <sup>-1</sup>	额定 回转速 Rated Speed min <sup>-1</sup>	额定扭矩 Rated Torque			启动 扭矩 Starting Torque mNm	長さ(L) Length mm	回 转 方 向 Direction of rotation
			mNm	kg·cm	oz·in			
32	246	205	98.1	1.0	13.9	(589)	55.4	CW
42	190	157	118	1.2	16.7	(679)	57.9	CCW
65	123	102	177	1.8	25.0	(1037)	57.9	CCW
94	84.9	70.2	265	2.7	37.5	(1531)	57.9	CCW
121	65.6	54.3	304	3.1	43.1	(1765)	60.4	CW
188	42.4	35.1	471	4.8	66.7	(2736)	60.4	CW
273	29.3	24.9	588	6.0	83.4	(3916)	60.4	CW
353	22.6	19.7	588	6.0	83.4	(4582)	62.9	CCW
546	14.6	13.4	588	6.0	83.4	(7154)	62.9	CCW
792	10.1	9.52	588	6.0	83.4	(10239)	62.9	CCW

铁芯电机 Iron Core Motor N×××LJ page14

直齿齿轮 Spur Gearhead RB-35V page64



Unit : mm

RB-35VM-N445LJ-12 DC12V 启动电流 Starting current 2840mA

减速比 Reduction Ratio (1/i)	无负荷 回转速 No-Load Speed min <sup>-1</sup>	额定 回转速 Rated Speed min <sup>-1</sup>	额定扭矩 Rated Torque			启动 扭矩 Starting Torque mNm	長さ(L) Length mm	回 转 方 向 Direction of rotation
			mNm	kg·cm	oz·in			
32	128	113	196	2.0	27.8	(1673)	66.9	CCW
42	98.7	83.7	294	3.0	41.7	(1935)	69.4	CW
65	63.8	55.5	392	4.0	55.6	(3013)	69.4	CW
94	44.0	38.1	588	6.0	83.4	(4385)	69.4	CW
121	34.0	30.0	588	6.0	83.4	(4998)	71.9	CCW
188	22.0	20.3	588	6.0	83.4	(7609)	71.9	CCW
273	15.2	14.4	588	6.0	83.4	(11172)	71.9	CCW
353	11.7	11.2	588	6.0	83.4	(13759)	74.4	CW
546	7.59	7.37	588	6.0	83.4	(20286)	74.4	CW
792	5.24	5.13	588	6.0	83.4	(28010)	74.4	CW

RB-35VM-N542LJ-24 DC24V 启动电流 Starting current 2785mA

减速比 Reduction Ratio (1/i)	无负荷 回转速 No-Load Speed min <sup>-1</sup>	额定 回转速 Rated Speed min <sup>-1</sup>	额定扭矩 Rated Torque			启动 扭矩 Starting Torque mNm	長さ(L) Length mm	回 转 方 向 Direction of rotation
			mNm	kg·cm	oz·in			
32	209	188	196	2.0	27.8	(1951)	66.9	CCW
42	162	140	294	3.0	41.7	(2165)	69.4	CW
65	105	92.7	392	4.0	55.6	(3346)	69.4	CW
94	72.1	63.6	588	6.0	83.4	(4988)	69.4	CW
121	55.8	50.1	588	6.0	83.4	(5756)	71.9	CCW
188	36.1	33.7	588	6.0	83.4	(8845)	71.9	CCW
273	24.9	23.7	588	6.0	83.4	(12201)	71.9	CCW
353	19.2	18.5	588	6.0	83.4	(16128)	74.4	CW
546	12.4	12.1	588	6.0	83.4	(24304)	74.4	CW
792	8.58	8.43	588	6.0	83.4	(33634)	74.4	CW

■ : 标准品 Standard  
 ■ : 特殊品 Custom-made  
 1. 以上皆为参考数值。  
 2. 以上参数皆为参考例子, 欢迎您提供您的参数。

The above data is for reference only.  
 The above specifications are an example and your specifications are welcomed.

索引 INDEX  
 选定 Selection Guide  
 技術情報 Technical Information  
 Motor  
 コアレス Coreless  
 ブラシレス Brushless  
 コアレス Coreless  
 磁気 Magnetic  
 エンコーダ Encoder  
 光学 Optical  
 行星 Planetary  
 遊星 Planetary  
 ギヤヘッド Gearhead  
 Spur  
 スパー  
 コアレス Coreless  
 コアレス Coreless  
 Iron Core  
 ブラシレス Brushless