

三交流电流 / 电压 变送器

3-Phase AC Current / Voltage Transducer

产品外形图 Externality



主要功能与特性 Function & Feature

- ◆ 将被测交流电流(电压)转换成按线性比例输出的直流电流或电压;
- ◆ 优良的温度特性和长期的工作稳定;
- ◆ 准确度高, 具有良好的性价比。
- ◆ Transforms the measured AC current/voltage to the DC current /voltage output according to the linear scale
- ◆ Excellent temperature characteristic and good working stability
- ◆ Configuration compactness and briefness

产品型号描述 Model Description

YPD-类型(Type)-输入(Input)-电源(Power Supply)-输出(Output)

类型 Type	3I: 三交流电流变送器 3U: 三交流电压变送器 3I: Three Phase AC Current Transducer 3U: Three Phase AC Voltage Transducer
------------	--

交流输入 AC Input	A1: 0~1A, A2: 0~5A, A3: 0~10A. V0: 0~70V, V1: 0~120V, V2: 0~250V, V3: 0~300V, V4: 0~450V, V5: 0~500V.
------------------	---

电源 Power Supply	P1: DC24V±15%, P2: DC12V±10%, P3: DC15V±10%.
--------------------	---

输出 DC Output	O1: 0~5V, O2: 1~5V, O3: 0~20mA, O4: 4~20mA, O5: RS485.
-----------------	---

范例1 (Example 1): YPD-3I-A2-P2-O4

说明: YPD系列三交流电流变送器 Details: YPD Series Three Phase AC Current Transducer	输入参数 (Input): AC0~5A 辅助电源: AC220V±15% Power Supply: AC220V±15% 输出参数 (Output): DC4~20mA
---	---

范例2 (Example 2): YPD-3U-V2-P2-O4

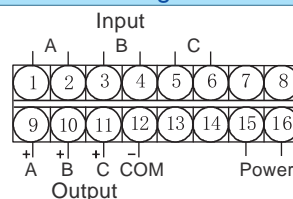
说明: YPD系列三交流电压变送器 Details: YPD Series Three Phase AC Voltage Transducer	输入参数 (Input): AC0~250V 辅助电源: AC220V±15% Power Supply: AC220V±15% 输出参数 (Output): DC4~20mA
---	---

注: 订货时, 请用户根据实际需要按上表仔细核对类型、
输入范围、输出范围和辅助电源。
Please check the Type, Input range, Output range and Power
supply at your order.

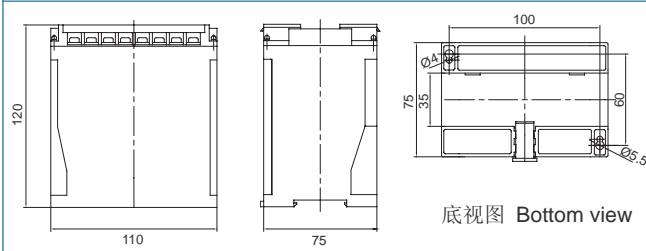
技术参数 Technical Index

执行标准 Standard	GB/T 13850-1998, IEC688:1992	
精度 Accuracy	0.2%, 0.5%	
整机功耗 Consumption	≤5VA	
工作稳定性 Accuracy drift	年变化率(Annual Variation) < 0.2%	
工频耐压 Insulation Voltage	AC2.0KV/min · 1mA (输入~输出/电源间 Between Input ~ Output / Power)	
绝缘电阻 Insulation Resistance	≥20MΩ (DC500V)	
冲击电压 Surge voltage	5KV (峰值 Peak Value), 1.2/50μs	
响应时间 Response Time	≤350ms	
输入范围 Input Range	AC0~10A、AC0~500V(可选 Optional), 50/60Hz	
吸收功率 Absorbed Power	每路(Per Route): <0.5VA/450V, <0.2VA/100V, <0.1VA/5A	
过载能力 Overload	电流: 2倍连续, 30倍1秒。电压: 2倍连续。 Current: 2 times continuous, 30 times 1s . Voltage: 2 times continuous	
负载电阻 Load Resistance	电流输出 Current Output	RL ≤ 550Ω
	电压输出 Voltage Output	RL ≥ 2kΩ
工作环境 Working environment	温度(T): -10~50℃ 湿度(RH): 20~90%, 无凝露 (Without condensation)	
贮存环境 Storage conditions	温度(T): -40~70℃ 湿度(RH): 20~95%, 无凝露 (Without condensation)	
安装方式 Installation	35mm DIN 导轨安装或M4螺钉固定 35mm DIN Sliding-way or M4 screws	
外型尺寸 Dimension	110×75×120mm	

接线方式 Connection Diagram

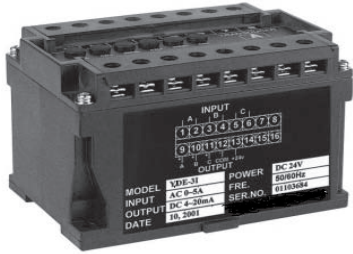


产品结构图 External Dimension



三交流电流 / 电压变送器 3-Phase AC Current / Voltage Transducer

产品外形图 Externality



主要功能与特性 Function & Feature

- ◆ 将被测交流电流(电压)转换成按线性比例输出的直流电流或电压;
- ◆ 优良的温度特性和长期的工作稳定;
- ◆ 准确度高, 具有良好的性价比。
- ◆ Transforms the measured AC current/voltage to the DC current /voltage output according to the linear scale
- ◆ Excellent temperature characteristic and good working stability
- ◆ Configuration compactness and briefness

产品型号描述 Model Description

YPE-类型(Type)-输入(Input)-电源(Power Supply)-输出(Output)-G

类型 Type	3I: 三交流电流变送器 3U: 三交流电压变送器 3I: Three Phase AC Current Transducer 3U: Three Phase AC Voltage Transducer
交流输入 AC Input	A1: 0~1A, A2: 0~5A, A3: 0~10A. V0: 0~70V, V1: 0~120V, V2: 0~250V, V3: 0~300V, V4: 0~450V, V5: 0~500V, V6: RS485
电源 Power Supply	P1: DC24V±15%, P2: DC12V±10%, P3: DC15V±10%.
输出 DC Output	O1: 0~5V, O2: 1~5V, O3: 0~20mA, O4: 4~20mA, O5: RS485.
G	三隔离设计(两隔离设计无此项) Three-Isolations only

范例1 (Example 1): YPE-3I-A2-P2-O4

说明: YPE系列三交流电流变送器 Details: YPE Series Three Phase AC Current Transducer	输入参数 (Input): AC0~5A
	辅助电源 (Power Supply): DC12V±10%
	输出参数 (Output): DC4~20mA

范例2 (Example 2): YPE-3U-V2-P2-O4

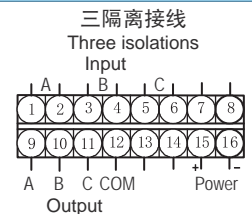
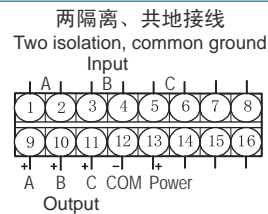
说明: YPE系列三交流电压变送器 Details: YPE Series Three Phase AC Voltage Transducer	输入参数 (Input): AC0~250V
	辅助电源 (Power Supply): DC12V±10%
	输出参数 (Output): DC4~20mA

注: 订货时, 请用户根据实际需要按上表仔细核对类型、
输入范围、输出范围和辅助电源。
Please check the Type, Input range, Output range and Power
supply at your order.

技术参数 Technical Index

执行标准 Standard	GB/T 13850-1998, IEC688:1992		
精度 Accuracy	0.2%, 0.5%		
整机功耗 Consumption	≤3 VA		
工作稳定性 Accuracy drift	年变化率(Annual Variation) < 0.2%		
工频耐压 Insulation Voltage	AC2.0KV/min · 1mA (输入~输出 / 电源间 Between Input - Output / Power)		
绝缘电阻 Insulation Resistance	≥20MΩ (DC500V)		
冲击电压 Surge voltage	5KV (峰值 Peak Value), 1.2/50μs		
响应时间 Response Time	≤350ms		
输入范围 Input Range	AC0~10A、AC0~500V(可选 Optional), 50/60Hz		
吸收功率 Absorbed Power	每路 (Per phase) : <0.5VA/450V, <0.2VA/100V, <0.1VA/5A		
过载能力 Overload	电流: 2倍连续, 30倍1秒。电压: 2倍连续。 Current: 2 times continuous, 30 times 1s. Voltage: 2 times continuous		
负载电阻 Load Resistance	输出方式 Output	辅助电源 Power Supply	负载电阻 RL
	电流输出 Current Output	+12V、+15V	≤270Ω
		+24V	≤550Ω
电压输出 Voltage Output		≥2kΩ	
工作环境 Working environment	温度(T): -10~50℃ 湿度(RH): 20~90%, 无凝露 (Without condensation)		
贮存环境 Storage conditions	温度(T): -40~70℃ 湿度(RH): 20~95%, 无凝露 (Without condensation)		
安装方式 Installation	35mm DIN 导轨安装或M4螺钉固定 35mm DIN Sliding-way or M4 screws		
外型尺寸 Dimension	110×75×72.6mm		

接线方式 Connection



产品结构图 External Dimension

